



**DEPARTMENT OF
CAPITAL PROGRAMS**
PRINCE GEORGE'S COUNTY PUBLIC SCHOOLS

NORTHERN ADELPHI AREA HIGH SCHOOL

Project Update Meeting
March 18, 2025



**DEPARTMENT OF
CAPITAL PROGRAMS**
PRINCE GEORGE'S COUNTY PUBLIC SCHOOLS

MEETING LOGISTICS



Servicios De Interpretación

Interpreting Services

On a Computer

At the bottom of the Screen will be an interpretation globe. Click that globe and then select Spanish.

En una Computador

En la parte baja de la pantalla habrá un globo de interpretación. Haga clic en ese globo y seleccione "Spanish."

On a Mobile Device

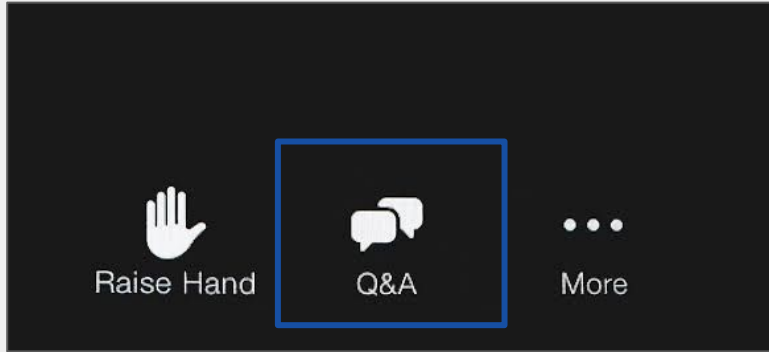
At the bottom of the screen, tap the ellipses icon on the bottom right (...). Tap "Language Interpretation." Tap "Spanish."

En un Dispositivo Móvil

En la parte baja de la pantalla, toca el icono de ellipses en la parte baja derecha (...). Toque "Language Interpretation." Toque "Spanish."



Questions During the Meeting



We value your input.

- Please type your questions/comments in the Q&A area of Zoom.
- Questions and answers from this town hall will be posted on the school's project page at bit.ly/DCP-NewNorthern.



Our Commitment

PGCPS is committed to delivering safe, state-of-the-art, and sustainable learning environments for our students, teachers, and communities.

Our Approach

Through the work of our traditional Capital Improvement Program and the nation's first Public School P3 Design-Build-Maintain approach, otherwise known as the Blueprint Schools Program, we're on track to have delivered over 30 new or modernized school facilities within a 15-year span.

AGENDA



**DEPARTMENT OF
CAPITAL PROGRAMS**
PRINCE GEORGE'S COUNTY PUBLIC SCHOOLS



Agenda

- 01.** Team Introductions
- 02.** Project Scope Review
- 03.** Project Timeline
- 04.** Current Status
- 05.** Next Steps
- 06.** Q&A



**DEPARTMENT OF
CAPITAL PROGRAMS**

PRINCE GEORGE'S COUNTY PUBLIC SCHOOLS

INTRODUCTIONS

Introductions



Dr. Charoscar Coleman
Chief Operating Officer



Jason Washington
*Associate Superintendent of
Supporting Services*



Shayla Jackson
*Director
Department of Capital Programs*



Dawn Holton
*Senior Mechanical Engineer
Department of Capital Programs*



Joe Howell
*Project Manager III
Department of Capital Programs*

Introductions



Scott Adams
Principal
Gilbert Architects



Hiwot Haileselassie
Project Manager
Department of Capital Programs



Jason Fritz
Civil Team Leader
Adtek Engineers, Inc.



Dr. David Lever
Principal
Educational Facilities Planning LLC



Rhianna McCarter
Supervisor - School Boundaries

PROJECT SCOPE



**DEPARTMENT OF
CAPITAL PROGRAMS**
PRINCE GEORGE'S COUNTY PUBLIC SCHOOLS



PROJECT OVERVIEW

- Construction of a new high school (grades 9-12) on the former Cherokee Lane Elementary School site and adjacent properties.
- Capacity for 2,000 comprehensive students and 600 Career & Technology Education (CTE) students.
- 22 integrated CTE programs, including Automotive, Construction, Cosmetology, Culinary Arts, Technology, and Healthcare trades.
- New access road connecting the high school to Cherokee Lane Elementary and Buck Lodge Middle School.

PROJECT SCOPE

The new school will include the following modern facilities:

- 2,600-seat gymnasium featuring three basketball courts.
- 900-seat auditorium with full stage and supporting spaces.
- Flexible black box theater.
- Dedicated music and dance studios.
- Central cafeteria atrium serving as the core of the school.
- Secure entrance vestibule under direct administrative supervision.
- Highly efficient building exterior, including a green vegetative roof.

EXTERIOR RENDERING



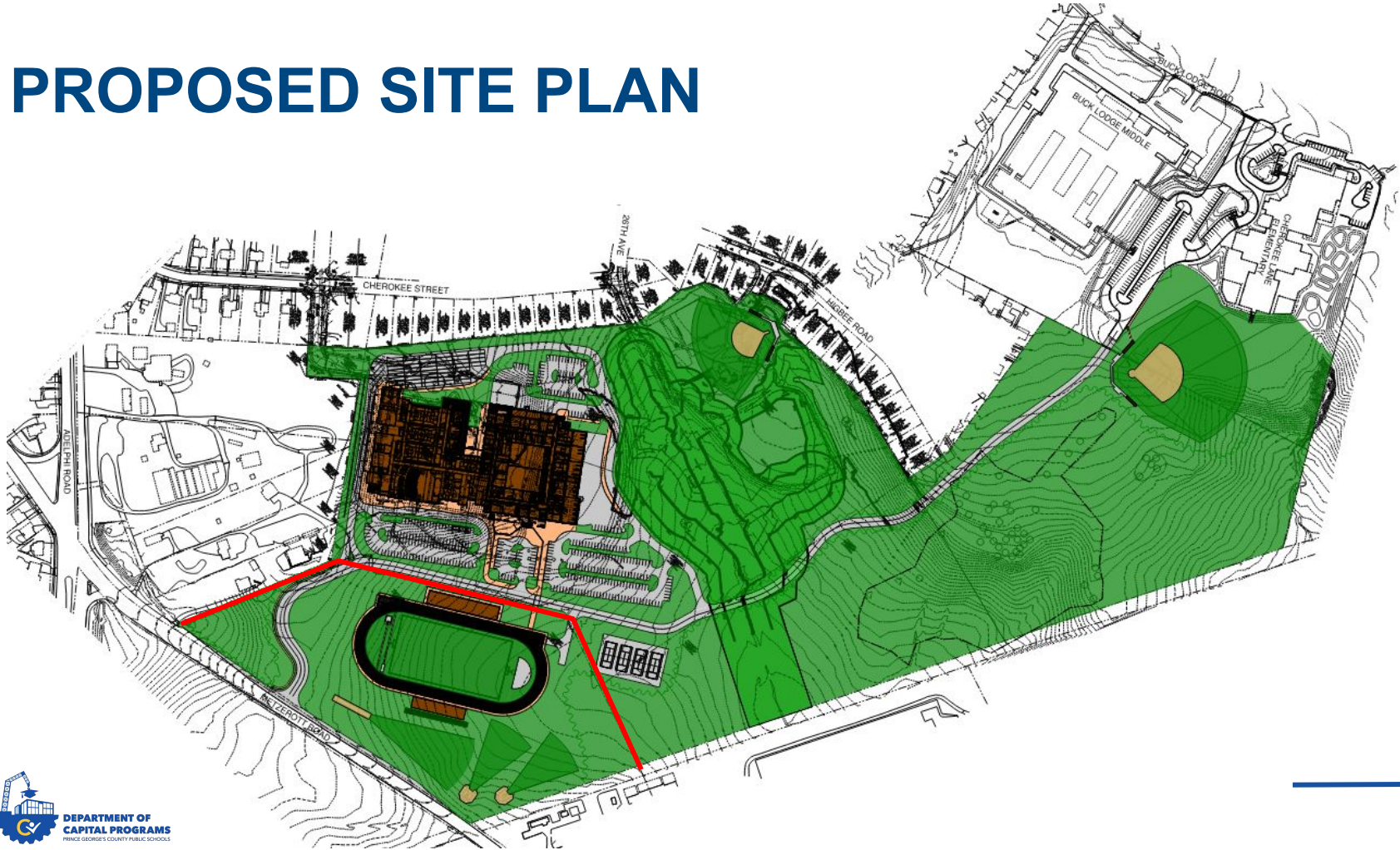
**Renderings shown are not representative of the final design and are subject to change.*

EXTERIOR RENDERING



**Renderings shown are not representative of the final design and are subject to change.*

PROPOSED SITE PLAN



PROJECT PHASING

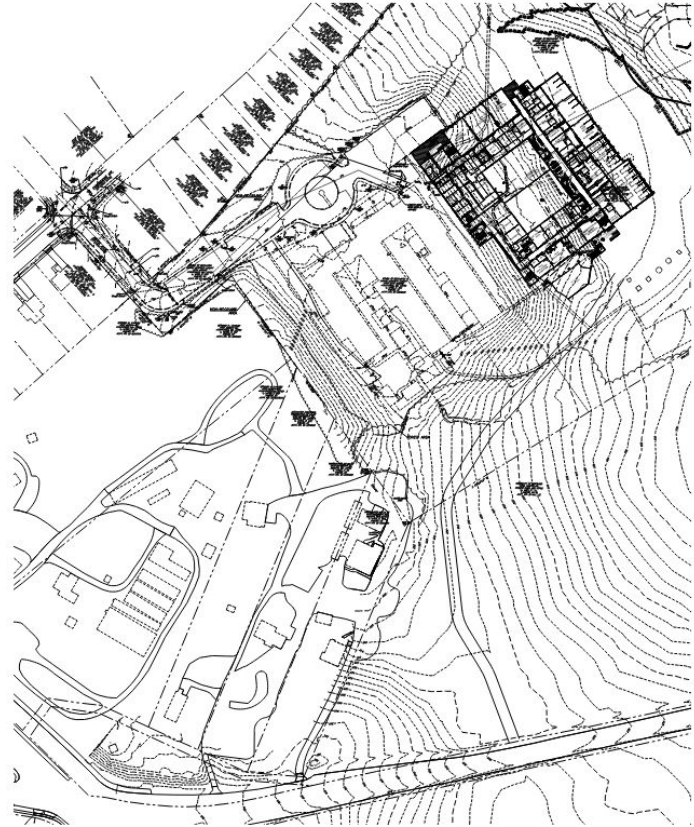
PHASE 1

- Begin sitework for new high school.
- Start construction of five-story classroom wing.
- Adelphi Elementary School (formerly Cherokee Lane ES) remains operational.

PHASE 2

- Relocate Adelphi Elementary students to the new Cool Spring Elementary School building.
- Demolish existing elementary school building.
- Begin construction of public spaces (gymnasium, auditorium, music rooms).
- Continue construction of classroom wing.
- Build access driveway connecting to Buck Lodge Middle School and new Cherokee Lane Elementary School.

Phase 1 and Phase 2 completed simultaneously.





**DEPARTMENT OF
CAPITAL PROGRAMS**

PRINCE GEORGE'S COUNTY PUBLIC SCHOOLS

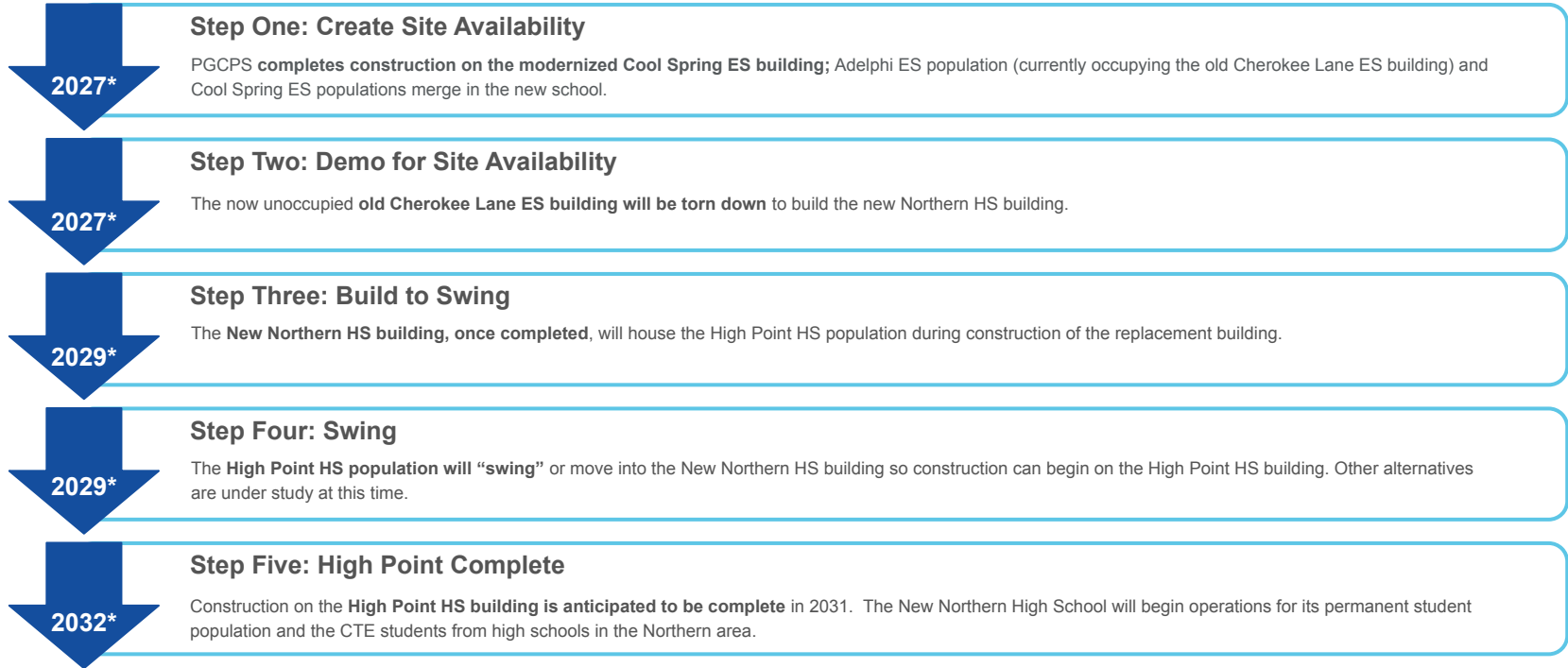
PROJECT TIMELINE

PROJECT TIMELINE

Fall 2021 - Present	Coordination with University of Maryland Shared Sports Facility (Ongoing)
Winter 2025	Completion of Design Development Drawings
Spring 2026	Construction Document Development (Ongoing)
Spring 2027 - Fall 2030	Construction Phase 1 - Five-Story Classroom Wing
Fall 2027	Demolition of Old Cherokee Lane Elementary School Building
Winter 2027 - Fall 2030	Construction Phase 2 - Public Spaces Wing
Fall 2030	Occupancy for High Point High School students (alternatives under study)
Fall 2032/2033*	Occupancy for New Northern Adelphi Area High School students

*This timeline is contingent upon future funding availability from county and state, permitting, technical issues (e.g. soils) and the final High Point High completion schedule.

PROJECT TIMELINE



*This timeline is contingent upon future funding availability from county and state, permitting, technical issues (e.g. soils).

CURRENT STATUS



**DEPARTMENT OF
CAPITAL PROGRAMS**
PRINCE GEORGE'S COUNTY PUBLIC SCHOOLS



CURRENT STATUS

DESIGN

- Gilbert Architects is revising the design of the building's central core due to increased stream buffer requirements.
- Design Development submission to IAC and MSDE is expected in Spring 2025.

SCHEDULE IMPACTS

- New state stream buffer guidelines have adjusted the overall project timeline.

STADIUM & ROAD ACCESS

- Agreements are in progress with the University of Maryland regarding a shared stadium and access driveway.
- An updated traffic study will determine the optimal driveway entrance location on Metzerott Road.

HIGH POINT

- Alternative plans for High Point are under review and could impact NNAAHS.
- PGCPs and the project team will evaluate impacts on learning, costs, transportation, schedule, and other factors before finalizing the decision.

FUTURE ATTENDANCE AREA

- Developing attendance areas is a key component of opening new schools.
- Community engagement typically begins approximately 18 months before a new facility opens.
- Draft attendance areas will be developed with community input gathered through meetings, surveys, and written feedback.
- The process is guided by Board Policy [2569](#) and Administrative Procedure [8391](#).



**DEPARTMENT OF
CAPITAL PROGRAMS**
PRINCE GEORGE'S COUNTY PUBLIC SCHOOLS

NEXT STEPS

NEXT STEPS

FOR THE PROJECT

- Continue the detailed design of the project.
- Meetings with PGCPSS support offices including Academics, Safety & Security, Transportation, etc.
- Meetings with the University of Maryland regarding the shared stadium facility.
- Safety concerns and protocols under consideration by project and school leadership.
- Requests for Proposals for a Construction Manager to go out this year.

FOR THE COMMUNITY

- Future Stadium Project Update Meetings with the University of Maryland and Fall 2025 Project Update Meeting
- The Project Planning Committee (PPC), typically chaired by the principal, will be led by Instructional Director Dr. Nicole Isley McClure.
 - Committee members include staff from feeder middle and high schools and PTO members from feeder elementary schools.
 - The PPC serves as the voice of school staff and the community, representing their perspectives and concerns throughout the project's development.

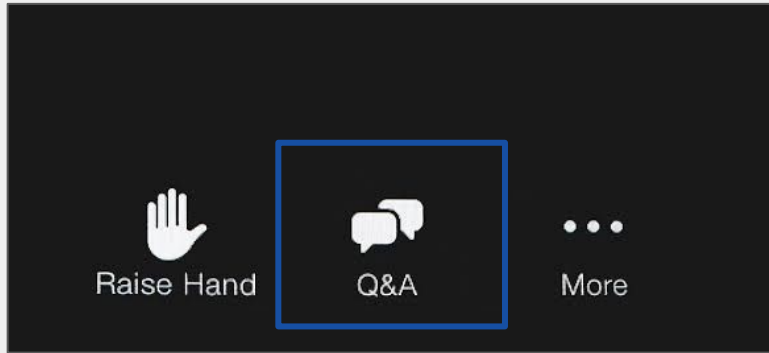
QUESTIONS



**DEPARTMENT OF
CAPITAL PROGRAMS**
PRINCE GEORGE'S COUNTY PUBLIC SCHOOLS



Question & Answer



- Please type your questions/comments in the Q&A area of Zoom.
- Questions and answers from this town hall will be posted on the New Northern High School project page at bit.ly/DCP-NewNorthern.
- If you have additional questions, please email them to capital.programs@pgcps.org.

Questions and answers from this town hall will be posted on the New Northern project page at bit.ly/DCP-NewNorthern.

THANK YOU

Contact Us

capital.programs@pgcps.org

